

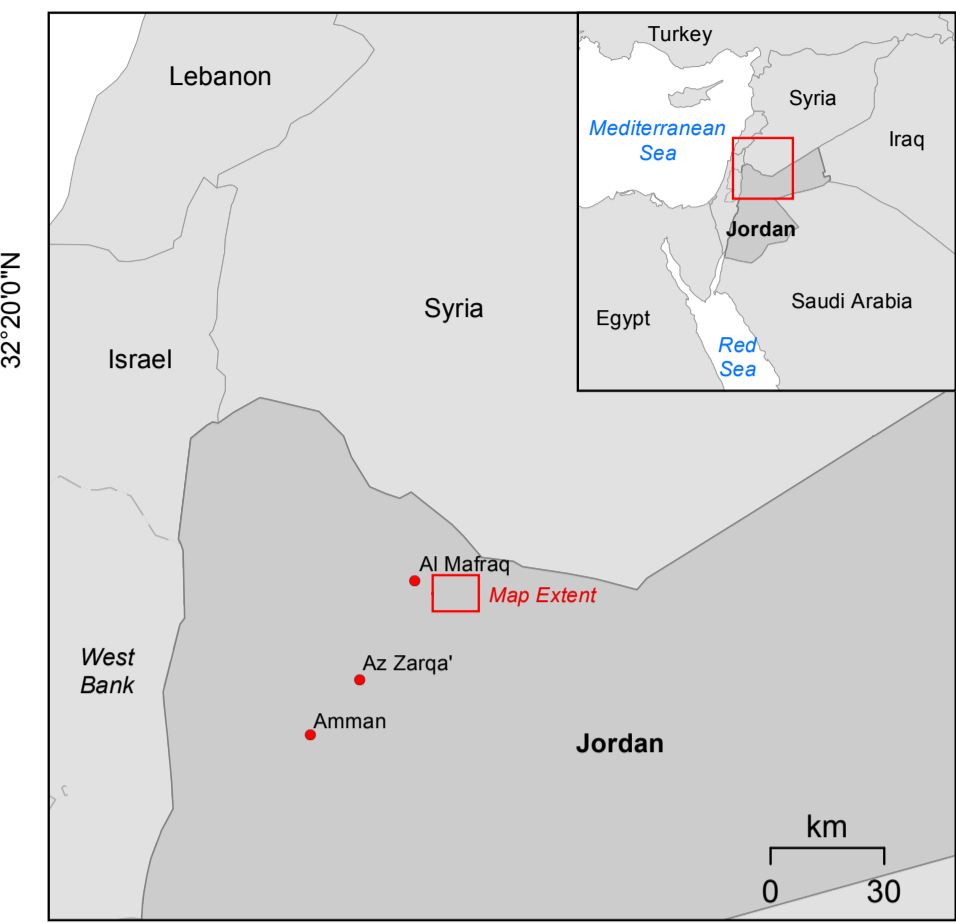
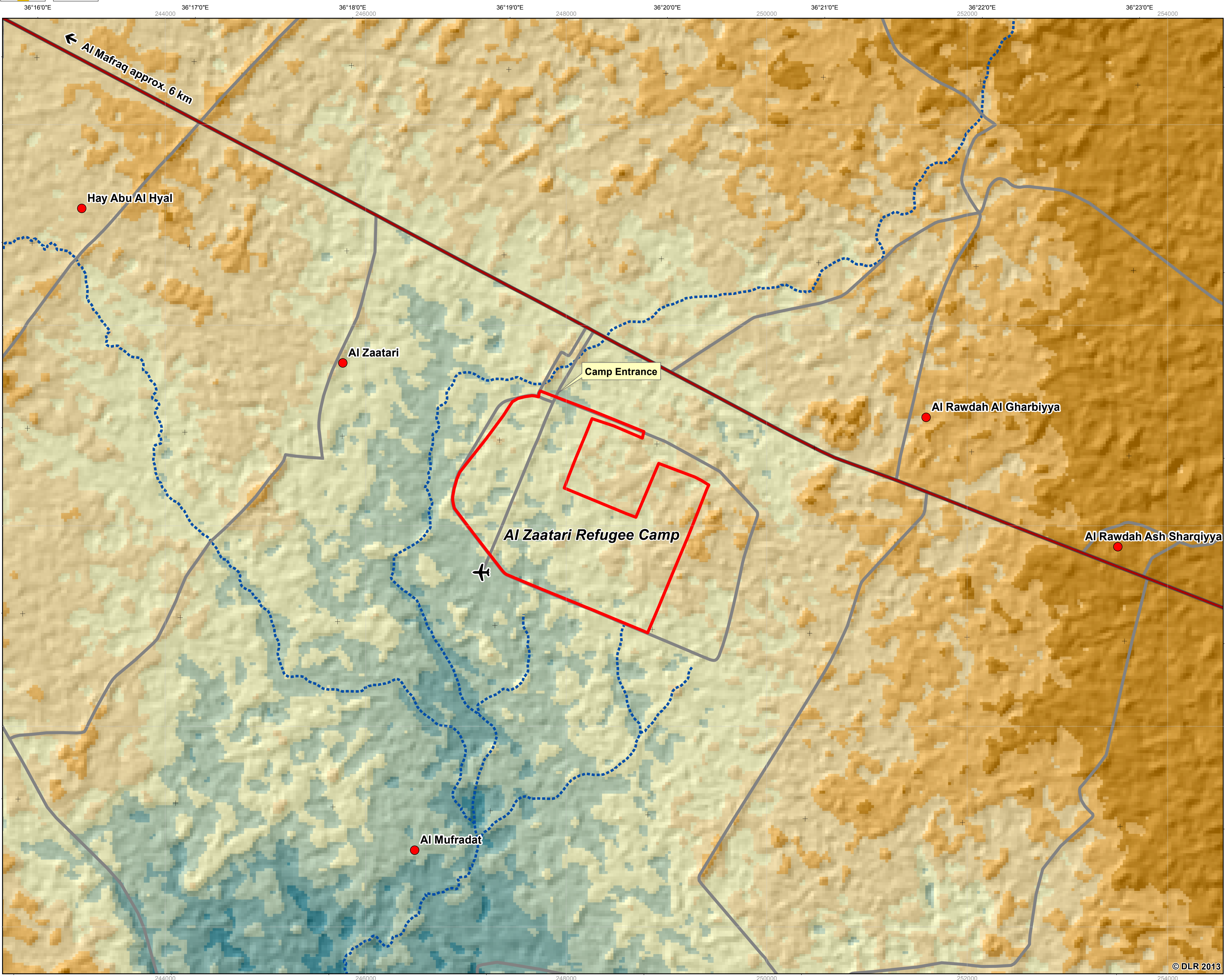


JORDAN - Al Zaatari

Refugee Camp as of January 03, 2013 - Reference Map (Elevation)

1:17,500

ZKI-DE Activation No. 001
Product No. 04
Version No. 01



Legend

- | | |
|-----------------------|--------------------------------------|
| Population | Elevation in m |
| ● Settlement | █ ≤ 620 |
| | █ > 620 - 630 |
| | █ > 630 - 640 |
| | █ > 640 - 650 |
| | █ > 650 - 660 |
| | █ > 660 - 670 |
| | █ > 670 |
| Infrastructure | |
| — Primary road | |
| — Secondary road | |
| ✈ Runway | |
| Hydrology | Refugee Camp |
| ⋯ Intermittent river | ▭ Camp extent as of January 03, 2013 |

Interpretation

The map shows the elevation of the surroundings of the Al Zaatari refugee camp in Jordan. The elevation information is derived from ASTER GDEM 2 data (vertical accuracy +/- 6m). Furthermore basic reference information, digitized on the basis of WorldView-2 satellite data acquired on January 03, 2013, at 08:52:52 UTC and LANDSAT-7 data acquired on December 16, 2012 at 08:07:11 UTC, is depicted. Not all settlements are captured. The results have not been validated in the field. ASTER GDEM 2 data as well as a hillshade derived from this data is used as backdrop. Please note, that information on elevation derived from ASTER data does not apply for the refugee camp area. ASTER data was acquired before 2011 and the elevation might have changed due to construction works.

Cartographic Information

0 250 500 1,000 1,500 Meters
 Local projection: UTM Zone 37N, Datum: WGS 1984
 Geographic projection: Lat/Lon (DMS), Datum: WGS 84
 Scale: 1:17,500 for A1 prints.

Data Sources

- | | |
|--------------------|---|
| WorldView-2 (0.5m) | © European Space Imaging 2013 |
| LANDSAT-7 (30m) | © USGS 2012 |
| ASTER GDEM 2 (30m) | © Product of METI and NASA 2010 |
| Vector Data | © DLR 2013 |
| Settlement names | © COD 2013
(http://cod.humanitarianresponse.info) |

Framework

The products elaborated for this Rapid Mapping Activity are realised to the best of our ability, within a very short time frame, optimising the material available. All geographic information has limitations due to the scale, resolution, date and interpretation of the original source materials. No liability concerning the content or the use thereof is assumed by the producer. The ZKI crisis maps are constantly updated. Please make sure to visit <http://www.zki.dlr.de> for the latest version of this product.

Map produced January 10, 2013 by ZKI
 © DLR 2013

zki@dlr.de
<http://www.zki.dlr.de>



Center for Satellite Based Crisis Information
 – Emergency Mapping & Disaster Monitoring –
 a service of DFD

German Remote Sensing Data Center
 German Aerospace Center

